

The logo for Vulcan, featuring the word "Vulcan" in a white, italicized serif font on a blue rectangular background with a green horizontal stripe at the bottom.

The Electronic Anti-Scale System Condominiums and Large Buildings



No Salt
No Chemicals
No Maintenance

German Technology
Absolutely Magnetism-Free





The alternative to water softeners

Managing a large building demands constant observation of all technical equipment, sanitary stations, outdoor areas, etc. Vulcan helps to improve manageability, sustainability and profitability in many areas.

Vulcan ensures all appliances which come in contact with water will obtain their maximum life expectancy as well as significantly reducing their maintenance requirements.



- ▶ Machinery and equipment perform more reliably: cooling towers, heating systems, etc.
- ▶ Reduces and prevents scale deposits throughout the entire piping system
- ▶ Less time and effort on maintenance in building and facilities
- ▶ Faster cleaning of kitchens and bathrooms
- ▶ Filters, shower heads and basins stay cleaner
- ▶ Considerable savings on cleaning agents
- ▶ Cleaner sprinkler nozzles for garden irrigation
- ▶ Food and beverages keep their natural taste



Piping system in an apartment building

The solution to scale and rust

Vulcan gently reduces already existing deposits in the piping system. The scale build-up process is reversed and the pipes gradually become clean again. This take-out process will not block up your pipes or drain because the treated crystals are microscopic in size and wash away in the water.

- ▶ Prevents scaling in pipes and appliances
- ▶ Gently sanitizes the piping system
- ▶ Protects against rust damage and perforation



Installation of a Vulcan S100 placed on the water main. This unit is protecting a condominium with 100 separate apartments.

Easy Do-It-Yourself installation

Vulcan is a Do-It-Yourself product and easily installed within a few minutes, without the need to cut pipes. You also will not require any tools.

Vulcan should be placed at the main water supply – this is usually close to the water meter.



Large residential complex

Vulcan-Impulse-Technology

The Vulcan-Impulse-Technology treats the water with special electronic impulses that take away the adhesive power of the scale particles. Scale components are simply washed away with the water as a fine powder. Vulcan also reduces already existing deposits. The build-up process is reversed. In addition, the electronic Vulcan impulses generate a metal-carbonate protective layer that prevents pitting corrosion.



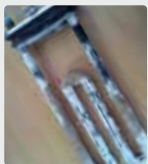
Prevents Scale and Rust

- ✓ Reduction of existing scale in the piping system
- ✓ Installation without cutting the pipe
- ✓ From ½" up to 40" pipe diameter
- ✓ Works on all pipe materials – iron, copper, plastic, stainless steel, PVC, compound pipes, PE-X, etc.
- ✓ 100% maintenance-free
- ✓ Eco-friendly solution without salt or chemicals
- ✓ Prolongs life of machinery and equipment
- ✓ Important minerals remain in the water
- ✓ Long life – fully cast in acrylic
- ✓ 25 year international warranty

Visible results of Vulcan water treatment - before and after



Piping system



Heating element in a hot water tank



Toilet bowl

Requirements

The iron/metal content should best not exceed 1 ppm and manganese should be below 0.1 ppm.

Vulcan works best with heating element surface temperatures of max. 203°F (95°C). Higher levels or temperatures might hinder the treatment strength in some cases.

Application examples

- ▶ Apartment houses
- ▶ Condominiums
- ▶ Dormitories
- ▶ Hospitals
- ▶ Retirement homes
- ▶ Nursing homes
- ▶ Large living buildings
- ▶ etc.

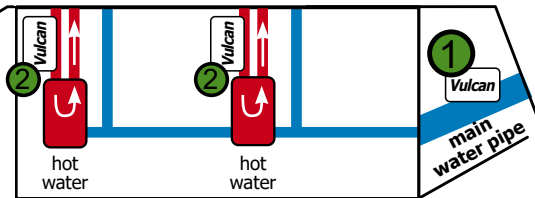
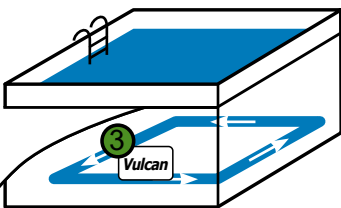
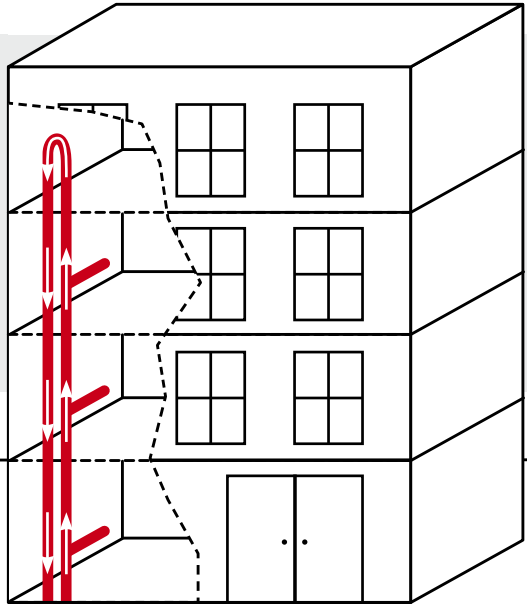


How to install Vulcan in condominiums and large buildings

In larger buildings there are always different areas to consider.
Below is an example of a typical Vulcan installation in a large building.

Installation areas are often the main building cold water supply (1), one or several hot water circulations (2) for the higher floor levels, pool operations (3), etc. **Each water circulation needs an own Vulcan.**

- ① Main water pipe
- ② Hot water circulation(s)
(install Vulcan on the return pipe, before the heat exchanger on **each** hot water circulation)
- ③ Pool water circulation
(install Vulcan after the sand filter)





How to choose the right Vulcan size for condominiums and large buildings

For buildings with peak times of high water capacities, you have to choose the following Vulcan size. To choose the right Vulcan model, check the pipe diameter at the main water pipe.

Pipe Diameter	Model
max. 2"	Vulcan S10
2½" - 3"	Vulcan S25
3½" - 4"	Vulcan S50
4½" - 5"	Vulcan S100
5½" - 6"	Vulcan S150
7" - 8"	Vulcan S250
9" - 10"	Vulcan S350
11" - 16"	Vulcan S500

Quality — Made in Germany

- ▶ Manufactured by Christiani Wassertechnik GmbH (CWT) in Germany
- ▶ Over 40 years of experience in physical water treatment
- ▶ Successful in more than 70 countries worldwide
- ▶ 25 years international warranty

